

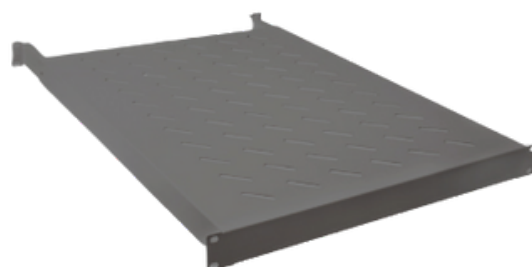
1U SHELF FOR FIX MOUNTING WITH ADJUSTABLE RAIL

ViRack

DATASHEET:MT230731v1

REFERENCE	DESCRIPTION	COLOR	PORTS
VIBF41U800	320mm depth / Variable rail lenght / 300mm adjustable for 600~800mmdepth cabinet.	BLACK	1 PC

VIBF41U800



This mounting shelf can be mounted on any 19" server or network cabinet. Thanks to its adjustable rail, it can be adapted to the different possible depths of any cabinet. Max. load capacity is 50kg.

APPLICATION

- **Color:** Grey
- Sturdy steel sheet with perforations
- **Shelf depth:** 320mm
- **Adjustable rail length:** 300mm
- **Compatible with a 600 - 800 mm depth cabinet**
- Mounting on a 19" server or network cabinet
- **Load capacity:** 50 kg
- Compatible with cabinets with a different depth

PRODUCT DIMENSIONS

